

LABORATORY ESSENTIALS

2026



DISCOVER IT!



BENCHTOP AUTOCLAVE

ZCK018

ZCK019



Full automation



Variety of programs



Safety and control

Offers valid until 07/31/2026.
Recommended retail prices, excluding VAT, valid except for typographical errors.
Non-contractual photographs. Offer limited to available stock. We reserve the right to limit the quantity requested. In case of stock shortage, we may offer alternatives equivalent to the requested item, with a different price but the same discount as the initially requested item.

DISTRIBUTED BY:



EMD Sp. z o.o.
Brzozowa 2
62-023 Kamionki k. Poznań
tel 695 667 893
www.sklep.emd.net.pl

INCUBATOR SERIES 636 PLUS

15%



- Made of painted and oven-dried steel, epoxy coated metal exterior cabinet and stainless steel interior.
- Door with double glass window for external control without temperature variations in the inner chamber.
- Air circulation system by natural convection.
- Supplied with two height-adjustable grille trays.

Code	JBB005	JBB001	JBB002	JBB003	JBB004
Capacity	18 L	30 L	45 L	65 L	125 L
Temperature range	RT+5 at 80°C				
Resolution	1 °C (configurable to 0.1°C)*.				
Temperature fluctuation	± 1.0 °C				
Homogeneity	2%				
Power	0.3 Kw	0.3 Kw	0.3 Kw	0.4 Kw	0.5 Kw
Dimensions (cm)					
external	44x38x55	46x51x69	50x55x73	55x55x84	64x68x91
internal	26x26x26	31x31x31	35x35x35	40x36x45	50x45x55
Weight	20 Kg	39 Kg	42 Kg	53 Kg	58 Kg

* consult

HIGH PRECISION INCUBATORS, 642

10%



Code	JBB006	JBB007	JBB008
Capacity	43 L	63 L	124 L
Load capacity per tray	15 kg		
Temperature range	RT +5 ~ 65°C		
Temp. resolution	0.1°C		
Temp. fluctuation	± 0.5°C		
Temp. uniformity	± 1.0°C		
Timer	0 ~ 9999 minutes		
Internal dim. (LxAxH cm)	35x35x35	40x35x45	50x45x55

FORCED AIR OVENS, SERIES 632 PLUS

15%



Code	JBD005	JBD006	JBD007	JBD008	JBD010
Capacity	30 L	45 L	65 L	125 L	230 L
Temperature range	80 - 250°C			RT+10 - 300°C	
Resolution	1°C (configurable at 0.1°C)*				0.1 °C
Fluctuation temp.	±1,0°C				
Homogeneity	2%				±2,5%
Approx. dim. cm ext	46x51x69	50x55x73	55x55x84	64x68x91	74x70x127

* consult

DRYING OVEN, SERIES 631 PLUS

15%



Code	JBD009
Capacity	18 L
Temperature range	80°C a 250 °C
Resolution	1 °C (configurable at 0.1°C)*
Fluctuation temperature	± 1.0 °C
Homogeneity	2%
Approx. dim. (cm) external	44x38x55

* consult

BIOCHEMICAL REFRIGERATED INCUBATOR

10%



Code	JB004	JB005
Capacity	70 L	150 L
Temperature range	0-65 °C	
Resolution	0,1 °C	
Temperature fluctuation	±0,5°C	
Temperature accuracy	±1°C (to 37 °C)	
Dimensions external	58x67x1210 cm	68x72x1410 cm

MORTAR WITH SPOUT AND PESTLE

15%



- Material: AISI 304 stainless steel

Code	Cap.	Ext. Ø	H*	Hand length
BBW002	500 mL	125 mm	83 mm	130 mm
BBW003	750 mL	140 mm	92 mm	130 mm
BBW004	1000 mL	160 mm	106 mm	130 mm
BBW005	1500 mL	180 mm	112 mm	130 mm
BBW006	2000 mL	200 mm	120 mm	130 mm

* height including base

DESICCATOR WITH KNOB & STOPCOCK

20%

ISO
13130BORO
3.3

Dimensions

d1: External diameter
d2: Internal diameter

- Without porcelain disc; includes lid with plastic stopper.

Code	d2	d1
BDB006	100 mm	151 mm
BDB007	150 mm	210 mm
BDB008	200 mm	269 mm
BDB009	250 mm	329 mm
BDB010	300 mm	392 mm

DESICCATOR WITH KNOB

20%

ISO
13130BORO
3.3

Dimensions

d1: External diameter
d2: Internal diameter

- Includes lid with polypropylene stopper. Does not include porcelain disc.

Code	d2	d1
BDD006	100 mm	151 mm
BDD007	150 mm	210 mm
BDD008	200 mm	269 mm
BDD009	250 mm	329 mm
BDD010	300 mm	392 mm

CELL CULTURE PLATE

15%




- DNase-, RNase-, and pyrogen-free. Individually bagged.
- Wells numbered with alphanumeric coding for easy identification. Sterilized by electron beam (E-beam).

Code	Wells	Bottom	Working volume	Pack
BRL001	6	Flat	1.90/2.90 mL	B/50
BRL002	12	Flat	0.76/1.14 mL	B/50
BRL003	24	Flat	0.38/0.57	B/50
BRL004	48	Flat	0.19/0.29	B/50
BRL005	96	Flat	0.075/0.20	B/50
BRL006	96	U-shaped	0.075/0.20	B/50

CRYOTUBE WITH EXTERNAL THREADED CAP

HASTA
20%

- Made of medical-grade polypropylene, resistant to freezing and thawing. Transparent, user-friendly design.
- Maximum liquid storage is 80% of total capacity. Temperature resistance range: -196°C to +121°C.
- Free of DNase/RNase, endotoxins, and human DNA.

Code	Capacity	Thread	Pack
BGN048	1 mL	External	B/100
BGN049	1 mL	Internal	B/100
BGN050	2 mL	External	B/100
BGN051	2 mL	Internal	B/100
BGN052	3,6 mL	External	B/100
BGN053	3,6 mL	Internal	B/100
BGN054	5 mL	External	B/100
BGN055	5 mL	Internal	B/100

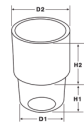
STOPPER RUBBER WITH FOLDING SKIRT

10%



ENDO plasticware

Dimensions



d1: diameter
d2: diameter
H1: height of reversible part
H2: height of inner part



- Working temperature range: 60/70°C
- Made of natural rubber. Not suitable for repeated sterilization in an autoclave.

Code	D1	D2	H1	H2	Lot
BMJ012	10.2 mm	13.3 mm	9.7 mm	10.2 mm	10
BMJ013	13 mm	18.7 mm	9.7 mm	10.2 mm	10
BMJ014	15.85 mm	20.2 mm	15.2 mm	15 mm	10
BMJ015	24 mm	28.3 mm	13.5 mm	21.4 mm	10
BMJ016	13.6 mm	18 mm	10 mm	15.6 mm	10
BMJ017	18.5 mm	24 mm	14.8 mm	18.5 mm	10
BMJ018	24.4 mm	28.8 mm	15.4 mm	21 mm	10
BMJ019	28.6 mm	34.6 mm	19.7 mm	16.5 mm	10

INFRARED STERILIZER

15%



Nehita



- Possibility of sterilization at: 400°C and 850°C.

Code	BRG016	BRG025
Ø hole	14 mm	35 mm
Tube length	150 mm	100 mm
Dimensions	175x135x190 mm	147x130x200 mm

DIGITAL COLONY COUNTER

15%



Nehita



YouTube



Code	BRJ003
Display	LED
Magnification	2x
Operating functions	average, zero (reset), countdown
Output	USB
Dimensions	35x30x37 cm

DOUBLE BAG FOR SAMPLE TRANSPORT

25%



ENDO plasticware



TAKE ADVANTAGE OF A
25%
DISCOUNT



Code	Dim. (zip bag)		Dim. (doc. bag)	
	Length	Width	Length	Width
BYF105	240 mm	155 mm	225 mm	155 mm

ZIP-LOCK BAG, WITH WRITING BANDS

15%



ENDO plasticware



Code	Length x Width	Pack	Lot
BYF117	80x60 mm	B/100	10
BYF118	110x70 mm	B/100	10
BYF119	150x100 mm	B/100	10
BYF120	180x120 mm	B/100	10
BYF121	220x150 mm	B/100	10
BYF122	250x180 mm	B/100	10
BYF123	300x200 mm	B/100	10

CELL FREEZING CONTAINER

20%



ENDO plasticware



- Made of sturdy cardboard with a coated top layer. Chemically resistant to alcohols and mild organic solvents.
- Stable temperature range from -196°C to 121°C. Suitable for storage in liquid nitrogen.

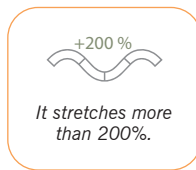
Code	Cap.	Material	Color
BYF129	12x1,5/2 mL	Foam	Blue
BYF130	18x1,5/2 mL	PC	White

FILM PARAFILM ROLL

5%



PARAFILM



- The flexible, self-sealing material allows it to conform to irregular shapes and surfaces.
- Resistant for up to 48 hours to many polar substances such as saline solutions, inorganic acids, and alkaline solutions.

Code	Roll of	Lot
BYH502	38 m x 10 cm	12
BYH503	75 m x 10 cm	12

PARAFILM M DISPENSER

10%



Nahita



- Made of acrylic. Designed for the storage, dispensing, and cutting of Parafilm® M.
- Compatible with rolls, tapes, and labels 5 and 10 cm wide.
- Hinged top lid for easy dispenser reloading.

Code	Dimensions
BYK002	180x120x160

* Parafilm roll not included

LOW FORM BEAKER

8%



GLASSCO

BORO 3.3

DIN 12331

ISO 3819

Code	Cap.	Ext. Ø	H.	Lot
CBC089	10 mL	26 mm	35 mm	10
CBC090	25 mL	35 mm	51 mm	10
CBC091	50 mL	42 mm	58 mm	12
CBC092	100 mL	50 mm	70 mm	12
CBC093	150 mL	60 mm	88 mm	10
CBC081	250 mL	70 mm	95 mm	12
CBC082	400 mL	80 mm	110 mm	10
CBC083	600 mL	90 mm	125 mm	6
CBC084	1000 mL	105 mm	145 mm	6

BEAKER LOW FORM

5%



ENDO plasticware

ISO 6706

DIN 12681



Code	Cap.	Grad.	Ext. Ø	H.	Lot
CBG028	25 mL	1 mL	33 mm	45 mm	10
CBG029	50 mL	2 mL	45 mm	60 mm	10
CBG030	100 mL	5 mL	53 mm	70 mm	10
CBG031	250 mL	10 mL	78 mm	95 mm	10
CBG032	500 mL	10 mL	88 mm	119 mm	10
CBG033	1000 mL	20 mL	104 mm	140 mm	6

PP GRADUATED BEAKER LOW FORM

10%



ISO 7056

AUTO +121°

APTO

Kartell

Code	Cap.	Grad.	d. x H.	Lot
CBH008	100 mL	5 mL	51x72 mm	12
CBH009	250 mL	10 mL	71x95 mm	16
CBH010	500 mL	10 mL	87x119 mm	12
CBH011	1000 mL	20 mL	109x147 mm	4
CBH012	2000 mL	50 mL	132x183.5 mm	4
CBH013	3000 mL	500 mL	158x201 mm	2
CBH014	5000 mL	500 mL	188.5x229 mm	2

STACKABLE JUG, TALL SHAPE

10%



AUTO
+120°

- Manufactured in PP.
- Raised graduation markings. Thick walls and high chemical resistance.

Code	Cap.	d.	h.
CCB021	250 mL	75 mm	115 mm
CCB022	500 mL	100 mm	137 mm
CCB023	1000 mL	125 mm	167 mm
CCB024	2000 mL	150 mm	217 mm
CCB025	3000 mL	170 mm	244 mm

STAINLESS STEEL JUG WITH RIM AND SPOUT

15%



- With curved rim and resistant to chemical agents.

Code	Capacity	Dim. (hxØ)
CCG008	250 mL	85x70 mm
CCG009	500 mL	132x85 mm
CCG010	1000 mL	148x102 mm
CCG011	2000 mL	180x132 mm
CCG012	3000 mL	180x160 mm
CCG014	4000 mL	200x200 mm
CCG013	5000 mL	210x180 mm

ERLENMEYER FLASK, NARROW NECK

HASTA
10%



ISO
1773

BORO
3.3

Code	Cap.	Ø base	Ø neck	H.	Lot
CDB094	50 mL	51 mm	22 mm	90 mm	10
CDB095	100 mL	64 mm	22 mm	105 mm	10
CDB083	250 mL	85 mm	34 mm	145 mm	10
CDB084	500 mL	105 mm	34 mm	180 mm	10
CDB085	1000 mL	131 mm	42 mm	220 mm	10
CDB086	2000 mL	166 mm	50 mm	280 mm	6
CDB087	5000 mL	220 mm	50 mm	365 mm	-

ISO BOTTLE BLUE CAP

5%



ISO
4796-1

BORO
3.3



- Pouring ring and blue PP cap (sterilizable up to 140°C). GL45 screw cap.

Code	Cap.	d.	h.	Lot
CFB077	100 mL	56 mm	105 mm	10
CFB078	250 mL	70 mm	143 mm	8
CFB079	500 mL	86 mm	182 mm	6
CFB080	1000 mL	101 mm	203 mm	4

WIDE MOUTH WASH BOTTLE LABELED

5%



- Washing bottle made of LDPE. The bottle printing includes the CAS number (Chemical Abstract Service), NFPA (National Fire Protection Association) codes and symbols, personal protective equipment symbols, and hazard statements.

Code	Cap.	GL	Printing	Cap
CKB016	250 mL	45	Metanol	38 mm
CKB017	250 mL	45	Ethanol	38 mm
CKB018	250 mL	45	Isopropanol	38 mm
CKB019	250 mL	45	Acetone	38 mm
CKB020	250 mL	45	Distilled water	38 mm

DOUBLE GRADUATION PP

15%

ENDO
plasticware

Code	Cap. mL	h. mm	Lot
DBJ041	10	130	10
DBJ042	25	148	10
DBJ043	50	169	10
DBJ044	100	250	10
DBJ045	250	295	6
DBJ046	500	350	6
DBJ047	1000	410	4

MEASURING CYLINDERS TALL FORM PMP

5%

ENDO
plasticwareISO
6706DIN
12681

- Blue graduation. With pouring spout.

Code	Cap.	Tol. mL	H. mm	Lot
DBJ048	10 mL	±0.2	145	10
DBJ049	25 mL	±0.5	170	10
DBJ050	50 mL	±1.0	200	10
DBJ051	100 mL	±1.0	250	10
DBJ052	250 mL	±2.0	325	6

VOLUMETRIC FLASK WITHOUT STOPPER

25%

TAKE ADVANTAGE OF A
25%
DISCOUNT

BORO
3.3ENDO
glassware

- White scale. Individual certificate included in the box.
- The top of the funnel includes a pouring spout.

Code	Cap.	Range mL	Ø mm	H. mm
DDJ022	750 mL	740-760	31	370
DDJ023	375 mL	364-385	23,5	325
DDJ024	1500 mL	1450-1550	35,5	455

PIPETTE FOR WINE STRAIGHT

15%

BORO
3.3

Code - DLD009

Code - DLD007_8

Code - DLD002_5

ENDO
glassware

Code	Length	Diameter	Type
DLD007	50 cm	30 mm	Straight
DLD008	65 cm	30 mm	Straight
DLD009*	77 mm	30 mm	Straight
DLD002	25 cm	20-22 mm	Curved
DLD003	35 cm	20-22 mm	Curved
DLD004	45 cm	20-22 mm	Curved
DLD005	65 cm	20-22 mm	Curved

* with rubber

1 MARK, CLASS AS, VOLUMETRIC PIPETTE

30%

TAKE ADVANTAGE OF A
30%
DISCOUNT

ISO
648

- With color band (according to ISO 1769 standard).
- Complies with USP (United States Pharmacopeia) standard.

GLASSCO

Code	Capacity	Tolerance	Band	Lot
DJD017	0.5 mL	±0.006 mL	●	5
DJD018	1 mL	±0.006 mL	●	5
DJD019	2 mL	±0.006 mL	●	5
DJD020	3 mL	±0.010 mL	●	5
DJD021	5 mL	±0.010 mL	○	5
DJD022	10 mL	±0.020 mL	●	5
DJD023	15 mL	±0.030 mL	●	5
DJD024	20 mL	±0.030 mL	●	5
DJD025	25 mL	±0.030 mL	●	5
DJD026	30 mL	±0.030 mL	●	5
DJD027	40 mL	±0.050 mL	○	5
DJD028	50 mL	±0.050 mL	●	5
DJD029	100 mL	±0.080 mL	●	5

LOW SPEED CENTRIFUGE DM0436E

15%



DUAB



Code	GBF016
Capacity de rotor	12 x 15 mL + 12 x 10 mL
Timer (min)	30 s-99 min 59 s / Continuous
Speed range (rpm)	100-3500 (increments of 100)
Maximum RCF (×g)	2260
Approx. dimensions (mm)	482 x 414 x 254

CENTRIFUGE MINI

10%



nahita blue

Code	GDC008	GDC001	GDC002	GDC009
Model	2507/4	2507/7	2507/11	2507/30
Speed	4000rpm ±3%	7000rpm ±3%	10000rpm ±3%	12000rpm ±5%
Max RCF	990 ×g	2910 ×g	5610 ×g	8550 ×g
Dimension	155×168×118 mm			

* check available heads

MICROPLATE CENTRIFUGE, MODEL P-X

15%

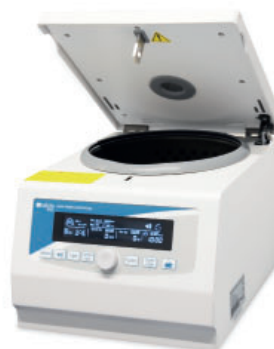


nahita blue

Code	GDC011
Speed range (RPM)	300-3000 (± 15 rpm)
Max. RCF	608
Timer	1-99 min. / 1-59 sec.
Capacity	2× 96-well microplates / ELISA plates
Dimensions (LxAxH) (mm)	225x255x215

HIGH SPEED CENTRIFUGE 2624/2

10%



nahita blue

Code	GLC005
Speed range (RPM)	100-15000 (increment of 10 rpm)
Max. RCF	21180 (10 ×g increment)
Timer	1-99 min. / 1-59 sec.
Max. capacity	50 mL
Dimensions (LxAxH) (mm)	280x360x250

* check available heads

MEDIBAS+ CENTRIFUGE MOD. 2742

15%



YouTube

nahita blue

ROTOR AND TUBE HOLDERS (INCLUDED)



Ref. GLK014



Ref. GLK005



Ref. GNPO05



Ref. GLK002

Code	GLC008
Max. capacity	400 mL (50mL x 8)
Timer	1-99 h. / 1-59 min. / 1-59 sec.
Speed max. (rpm)	100-6000
Max. RCF	5150 ×g (10 ×g increment)
Dimensions (mm)	390×500×320

* check available heads

MODEL 2811R HIGH SPEED REFRIGERATED CENTRIFUGE

15%



Code	GLF003
Speed range (RPM)	200-16000 (increment of 10 rpm)
Max. RCF	24100(10 ×g increment)
Timer	1-99 h. / 1-59 min. / 1-59 sec.
Temperature range	-20 °C / +40 °C
Minimum temperature at max. speed	0 °C
Maximum capacity	400 mL (100 mL x 4)
Dimensions (LxAxH) (mm)	493x584x345

* check available heads

MEDIBAS+ LOW SPEED REFRIGERATED CENTRIFUGE

10%



Code	GNF001
Speed	100~6000 rpm (increment of 10 rpm)
Max RCF	5150 ×g (increment of 10×g)
Timer	1-99 h/1-59 min/1-59 s.
Temperature range	-20 °C~+40 °C
Min. temperature at max. speed	0 °C
Max. capacity	400 mL (50 mL x 8)
Dimensions	634 × 548 × 335 mm

* check available heads

PROFESSIONAL BINOCULAR MICROSCOPE

12%



Code	HBC025	HBC026
Head	Binocular	Triocular
	Rotatable 360° and inclined 30°	
Eyepieces	WF10x/22 (wide field)	
Revolver	Quadruple	
Objectives	Plan achromatic, infinity-corrected objectives 4x; 10x; 40 (R); 100x (R)(I)	
Stage	Double graduated stage, 185 × 142 mm	
Condenser	Abbe N.A.1.25	
Focus	Coaxial coarse/fine focus controls	
Illumination	Köhler; LED 5W	
Dimensions	380x275x430 mm	

HDMI MICROSCOPE CAMERA

20%



Code:
HGB008



Code:
HGB009



- C-mount CMOS cameras.
- Code HGB009 includes the ToupView application for smartphones or tablets.

Code	HGB008	HGB009
Connections	HDMI (Direct display) WIFI (USB adapter) Ethernet (LAN)	USB (Computer cable) WIFI (AP) (STA)(LAN) Ethernet (LAN)
Sensor and size (mm)	1080P/2MP/Sony IMX185(C) 1/1,9"(7,20x4,05)	4MP/Sony IMX347(C) 1/1,8"(7,8x4,38)
FPS / max. resolution	30/1920x1080 (HDMI) 25/1920x1080 (RED)	30/2688x1512 (USB) 30/2688x1512 (RED)
Exposure (ms)	0,06 - 918	0,021 - 1000
Software	XCamView	XCamView
Output	Type C thread	Type C thread

SPLIT BEAM UV/VIS SPECTROPHOTOMETER

10%



- **Working mode:** photometry, quantification, spectrum, kinetics, time scan, multi-wavelength, DNA/protein, and customized.
- **Software:** the equipment includes UVStudio software. Optional UVStudio GLP/GMP for access to the user management module.

Code	HJD015
Optical system	Split beam, 1200 lines/mm grating
Wavelength range	190-1100 nm
Bandwidth	2 nm
Light source	Xenon flash lamp
Photometric range	-0,3-3 A; 0-200% T; 0-9999,9 C

VISIBLE SPECTROPHOTOMETER

10%



- **Working mode:** photometry, quantification, and scanning.
- **Software:** the equipment includes EasyUV Basic software. Optional EasyUV.

Code	HJB007
Optical system	Split beam, 1200 lines/mm grating
Wavelength range	320-1100 nm
Bandwidth	4 nm
Light source	Tungsteno
Photometric range	-0.3~3 A / 0~200 %T / 0~9999.9 C

SPECTROPHOTOMETER UV-VIS

15%



- **Working mode:** photometry and quantification.
- **Software:** the equipment includes EasyUV Basic software.

Code	HJD017
Optical system	Single beam, 1200 lines/mm grating
Wavelength range	200-1050 nm
Bandwidth	4 nm
Light source	Tungsteno and deuterio
Photometric range	-0,3-3 A; 0-200% T; 0-999.9 C

CUVETTE

15%




	Code	Description	Cap.	Lot
optical PS	HJM004	Macro	4.5 mL	10
	HJM005	Semi-micro	1.5 mL	10
	HJM007	Semi-micro	2.5 mL	10
	HJM010	4 optical faces	4.5 mL	10
PMMA	HJM006	Macro	4.5 mL	10
	HJM008	Semi-micro	2.5 mL	10
	HJM009	Semi-micro	1.5 mL	10
	HJM011	4 optical faces	4.5 mL	10


THERMOBLOCK MODEL 705

13%





High thermal precision



Simple and intuitive use

Code	JDS010
Capacity	6x15 mL
Temperature range	Ambient 100°C
Timer	1-999 sec or 1-999 min
Sensor	PT100
Approx. dimensions	140x115x210 mm

CO2 INCUBATOR

15%

nahita



YouTube

Code	JBB020
Temperature range	RT+5°C - 60°C
Temperature resolution	0,1°C
Chamber volume	50 L
Chamber and trays material	Stainless steel

HEATING MANTLE WITH STIRRING

10%

nahita
blue

YouTube



Code	JGB009	JGB010
Model	Analog	Digital
Capacity		20 L
Maximum temperature		380°C
Consumption		2,5 kW

ANALYTICAL BALANCE

12%

nahita
blue

Code (ext. calibration)	KBF010	KBF011	KBF012
Code (int. calibration)	KBF013	KBF014	KBF015
Capacity (g)	120	320	520
Readability (mg)		0,1	
Units		g/oz/ct/mg	
Repeatability (mg)	±0,1	±0,2	±0,2
Linearity (mg)	±0,2	±0,3	±0,3
Interface		RS232/USB	
Pan size (mm)		Ø 90	

PRECISION BALANCE

10%

nahita
blue

Code (ext. calibration)	KBD021	KBD023
Code (int. calibration)	KBD022	KBD024
Capacity (g)	0-520	0-1000
Readability (g)	0.001	
Units/Functions	g/ct/oz/mg	
Repeatability / Linearity (g)	± 0.002	
Pan size (mm)	Ø 90	

PP WATCH GLASSES

20%

ENDO
plasticware

- Without graduation. Approximate thickness: 1 mm.
- With a support base that prevents rotation.
- Withstand temperatures up to +120°C.

Code	Ø (mm)	Lot
KBN070	60	10
KBN071	80	10
KBN072	100	10
KBN073	120	10

BENCHTOP PH METER PH820

5%



YouTube

APER
INSTRUMENTS


Code	KDD009
Parameters	pH/mV/°C
pH	
Range	-2.000 – 19.999 pH
Resolution	0.1/0.01/0.001 pH
Accuracy	±0.002 pH ± 1 digit
Calibration	up to 5 automatic points
mV	
Range	± 1999 mV
Resolution	1 mV
Accuracy	±0.1 % FS ± 1 digit
Temperature	0 – 100°C

ELECTRODE STAND


15%



Nahita



Multifunction head



360° articulated arm

Code	KDG001
Dim. (folded)	190x120x210 mm
Ø Holes	1 de 13.5 mm, 2 de 13 mm, 2 de 12 mm, 1 de 7mm

MULTIPARAMETER ANALYZER

7%



APER
INSTRUMENTS

Code	KZD005
Parameters	pH/EC/°C
Conductivity	
Range	0-200.0 µS/cm; 0-2000 µS/cm 0-20.00 mS/cm; 0-50.0°C
Resolution / Accuracy	0.1/1 µS, 0.01 mS / ±1%Fs
Calibration	1 to 3 points
Temperature coefficient	0.00 to 4.00% / °C
pH	
Range	-2.00 - 16.00 pH
Resolution / Accuracy	0.01 pH - ±0.01 pH
Calibration	1 to 3 points
Salinity	0 to 10.00 ppt

BENCHTOP CONDUCTIMETER EC820

7%



APER
INSTRUMENTS

Code	KGD006
Parameters	Cond/TDS/Sal/°C
Conduc. Range	
	0.00-19.99 µS/cm; 20.0-199.9 µS/cm; 200-1999 µS/cm, 2-19.99 mS/cm; 20-199.9 mS/cm; 200-1999 mS/cm
TDS range	0.1 mg/L – 100 g/L (500 g/L S9500)
Salinity	0 – 100 ppt

PORTABLE METER

10%

APER
INSTRUMENTS



Advanced technology



Storage capacity

Code	KZD032	KZD035	KZD034
Model	SX751	SX723	SX725
Parameters	pH/mV/ORP/DO Cond/TDS/Sal/Res	pH/mV/Cond/ TDS/Sal/Res	pH/mV/DO
pH			
Range	-2.00 to 19.99pH		
Conductivity			
Range	0.00 to 19.99 µS/cm; 20.0 to 199.9 µS/cm 200 to 1999 mS/cm; 2.00 to 19.99 mS/cm 20.0 to 199.9 mS/cm		

ANALOGICAL STIRRER WITH HEATING

10%



RS Lab



Code	LBB003
Speed range	0-1500 rpm
Maximum stirring volume	20 L
Temperature range	Ambient - 340°C
Plate material	Ceramic coating
Plate diameter	ø 135 mm
Approx. dimensions	280 x 160 x 85 mm

DIGITAL STIRRER WITH HEATING

15%



RS Lab



Code	LBD005
Plate material	Metallic ceramic coating
Display	LED
Speed range	200 - 1500 rpm
Temperature range	Ambient - 280°C
Maximum volume	3 L
Plate diameter	ø 135 mm
Approx. dimensions	260 x 150 x 80 mm

DIGITAL STIRRER WITH HEATING MANTLE FOR BOTTOM-ROUND FLASKS

15%



RS Lab

Advanced
safetyPrecise and
uniform heatingDurability and low
maintenance

Code	LBD011	LBD012	LBD013	LBD014
Capacity (round-bottom flasks)	100 mL	250 mL	500 mL	1000 mL
Ø int.	73 mm	90 mm	119 mm	145 mm
Speed range	200-1500 rpm			
Temperature range	25-280 °C			
External temperature sensor	PT100 (accuracy ± 0,1°C)			
Protection rating	IP21			

MULTI-POSITION HOTPLATE
MAGNETIC STIRRER

10%



RS Lab



Code	LBD023
Maximum stirring capacity (H ₂ O)	40 L (10 L x 4)
Pan size	ø 135 mm
Display	LCD
Speed range	200-1500 rpm
Temperature range	25-340°C
Dimensions (LxAxH)	698 x 270 x 128 mm

ULTRA-FLAT MAGNETIC STIRRER

10%



RS Lab



Code	LBG004
Speed range	15-1500 rpm
Maximum stirring volume	0,80 L
Maximum stirring weight	2 kg
Operation indicator	Yes
Plate diameter	ø 90 mm
Dimensions (LxAxH)	175 x 120 x 15 mm

ROTARY TUBE STIRRER

20%



YouTube



Code	LJG006	LJG008
Type	Disc	Grill plate
Speed	20-80 rpm	
Angle	40°-80°	-
Cap. (mL)	8x50 - 16x15 - 24x1.5/2	4x50 - 10x15 - 8x1.5/2
Dimensions	230x180x265 mm	425x100x125 mm

MULTI-POSITION MAGNETIC STIRRER

10%



YouTube



Code	LBJ003	LBJ004
Number of positions	9	15
Work plate material	Corrosion-resistant PET plate	
Maximum stirring capacity	9x500 mL	15x250 mL
Stirring direction	Counterclockwise direction	
Speed	50-1500 rpm	
Stirring rod size	30 mm	
Dimensions	435x330x85 mm	576x330x63 mm

DIGITAL VORTEX MIXER WITH SENSOR MODEL 710

10%



ACCESSORIES (INCLUDED)



Code LGG030



Code LGG031



Code LGG032

- Two operating modes: touch and continuous.
- Equipped with an IR sensor to activate/deactivate operation.

Code	LGB007
Motor	DC24V/1.5A
Speed range	200-3000rpm ± 5%
Circumference diameter	4.5mm
Display	LCD
Sensor	IR

DIGITAL OVERHEAD STIRRER

20%



Code	LLB008
Speed range	100-1200 rpm (± 10 rpm)
Time	0-24 h
Maximum capacity	5 L
Maximum viscosity	5000 mPas
Dimensions	134x70x173 mm

BOTTLE TOP DISPENSER ACCUDOSE DUAL

20%



YouTube

DIGIPETTE



AUTO
+120°

Code	Vol. mL	Increments
MDD085	0.25-2.5	0.05 mL
MDD086	0.5-5	0.1 mL
MDD087	1-10	0.2 mL
MDD088	2.5-30	0.5 mL
MDD089	5-60	1.0 mL

MONOCHANNEL DIGIPETTE PREMIUM MICROPIPETTE

5%



DIGIPETTE



Code - MGB095

- Precise volume adjustment with built-in locking system.
- Universal tip compatibility.

Code	Volume μL	Increm. μL
MGB088	0.1-2.5	0.002
MGB089	0.5-10	0.02
MGB090	2-20	0.02
MGB091	5-50	0.1
MGB092	10-100	0.1
MGB093	20-200	0.2
MGB094	100-1000	1
MACROPIPETTE		
MGB095	500-5000	10
MGB096	1000-10000	20

MICROPIPETTE ULTRALITE

20%



DIGIPETTE



Code	Volume (μL)	Increments (μL)
8 channels		
MGG040	0.5-10	0.01
MGG041	2-20	0.02
MGG042	5-50	0.04
MGG043	10-100	0.20
MGG044	20-200	0.20
MGG045	40-300	0.40
12 channels		
MGG046	0.5-10	0.01
MGG047	2-20	0.02
MGG048	5-50	0.04
MGG049	10-100	0.20
MGG050	20-200	0.20
MGG051	40-300	0.40

MICROPIPETTE ULTRALITE MINI

15%



DIGIPETTE



- Optimal size for greater comfort, 130 mm in length.
- With tip ejector. Autoclavable.

Code	Volume (μL)
MGD111	5
MGD112	10
MGD113	20
MGD114	25
MGD115	50
MGD116	100
MGD117	200

CT SERIES PERISTALTIC PUMP

12%



Nehita



Code	MPD003
Maximum speed	600 rpm
Speed resolution	0,1 rpm
Maximum flow	2280 ml/min
Suction angle	10°-720°
Suction speed	10-300 rpm
Protection class	IP31
Dimensions (LxAxH)	290x200x255 mm

WATER PURIFICATION SYSTEM

7%



HYDROLAB

Code	PDB006	PDB006.40
Power supply	mains water	
Dimensions	200x370x430 mm	
Purified water production capacity	4 L/h	
Purified water conductivity	< 0,06 µS/cm	
Alerts	monitoring messages/alarms	
Cartridges	interchangeable and easy replacement	
Pressure gauge	for inlet water	
Storage tank	10L (purified water)	40L (purified water)

VACUUM MANIFOLD KIT

15%



Nahita

Code	Positions	Capacity
PJB018	1 Position	300 mL
PJB021	1 Position	500 mL
PJB019	3 Positions	300 mL
PJB022	3 Positions	500 mL
PJB020	6 Positions	300 mL
PJB023	6 Positions	600 mL

FILTER STANDARD

10%

FILTRES



YouTube

Application in pharmaceutical and agri-food industries, healthcare, education, and research.

Code	Ø	Pack
PSB002	70 mm	100
PSB003	90 mm	100
PSB004	100 mm	100
PSB006	150 mm	100
PSB008	190 mm	100
PSB009	250 mm	100
PSB015	100 mm	100
PSB016	130 mm	100
PSB017	150 mm	100
PSB018	190 mm	100
PSB019	250 mm	100
PSB020	330 mm	100

VACUUM PUMP

10%

Nahita



Code
PXB011

Code
PXB010

Code	PXB010	PXB011
Vacuum pressure	up to 200 mbar	up to 50 mbar
Flow rate	20 L/min	30 L/min
Pump heads	1	2
Noise level	<50dB	<50dB
Temperature	7-40°C	

ROUND ULTRASONIC BATH WITH HEATING

7%

Nahita



Code	ZCC031	ZCC032	ZCC033
Tank dimensions mm	Ø300x220	Ø350x240	Ø450x280
Volume	15 L	22 L	44 L
Ultrasonic power	360 W	480 W	900 W
Heating power	400 W	600 W	1000 W
Frequency	28/40 kHz		
Time	1-99 min		
Temperature	0-80 °C		

AUTOClave STERILIZATION TAPE

20%



- Lead-free with proper storage.

Code	Length	Width	Lot
ZCM008	50 m	19 mm	8

SELF-SEALING STERILIZATION POUCHES

15%

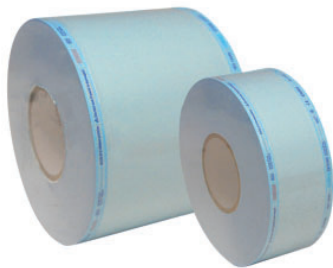


- Hermetically sealed with a self-adhesive strip.

Code	Dimensions	Box
ZCM009	90x165 mm	200
ZCM010	90x260 mm	200
ZCM011	135x260 mm	200
ZCM012	190x360 mm	200

PAPER REEL TO STERILIZE

10%



- Roll with paper base and plastic film.
- For sterilizing various materials.
- With sterilization indicator and color change on the sides.

Code	Dimensions	Lot
ZCM015	150 mm x 200 m	4
ZCM016	200 mm x 200 m	2
ZCM017	250 mm x 200 m	2

PADDLE BLENDER

12%



Code	ZHB002
Capacity	3 - 400 mL
Timer	1 sec - 100 hours
Blade speed	3 - 12 strokes/sec
Blade distance	0 - 50 mm
Bag size	17 x 30 cm
Ambient temperature	0 - 35 °C
Dimensions	420 x 230 x 330 mm

ANALOGUE HOMOGENISER

12%



Code	ZHB005	ZHB006
Speed range	5000-35000 rpm	8000-30000 rpm
Speed adjustment	Uniform, 6 speed levels	
Total capacity	0.5-250 mL	150-10.000 mL
Blade material	Stainless steel 316	

STERILIZED BAG SEALING MACHINE WITH ROLLER HOLDER

10%



Code	ZZC003
Sealing width	15 mm
Maximum sealing length	300 mm
Maximum plastic thickness	0.4 mm
Dimensions	370x310x180 mm

* Roll not included